

ADDENDUM NO. 5

TO: ALL PLAN HOLDERS

RE: COVID Center – Lafayette County, Arkansas

ADDENDUM DATE: May 23, 2022

The Plans, Specifications and Contract Documents for the above referenced project are hereby modified as follows:

1. **Sheet 7: Water heater to be modified to a 50 gallon gas water heater instead of electric. Manufacturer to remain as Whirlpool.**
2. **Sheet 8: Sheet 8 to be replaced with attached revision. HVAC units modified to use gas heat and 3 separate 5 ton units to be provided as shown or approved equal.**

PROJECT CLARIFICATION

1. Southwest Planning District has confirmed that material draws will be allowed on this project to assist in contractor expenses.
2. Contractor to coordinate gas connection, meter location and size with utility provider. Service line to be sized according to manufacturer requirements for water heater and package HVAC units.

ADDENDUM NO.5 ISSUED BY:

A.L. FRANKS ENGINEERING



Caleb Mudford, P.E.
Project Manager

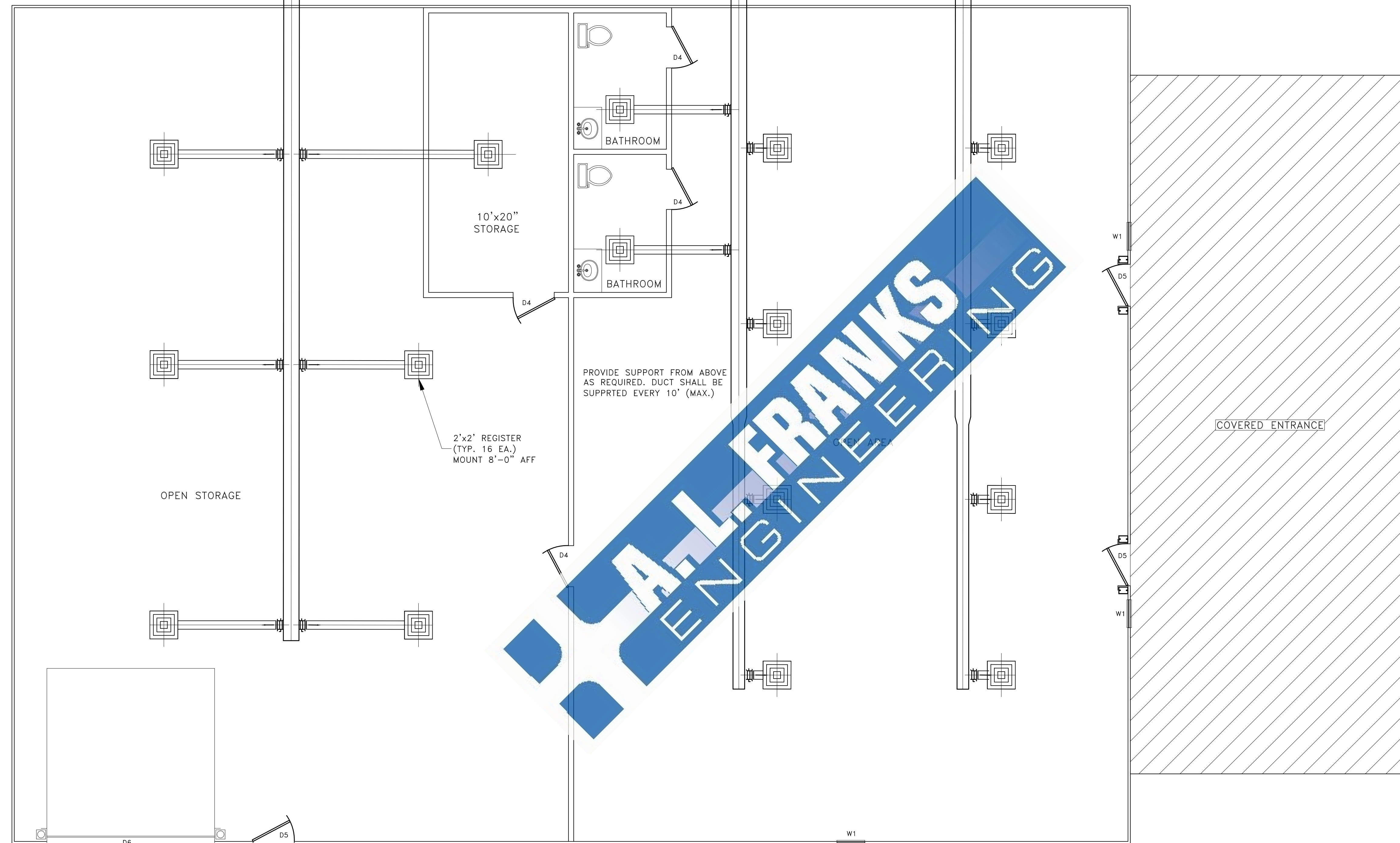


5-23-22

CU-1-SHALL BE MOUNTED ON A 4" CONCRETE PAD RHEEM - MOD#RGECR060AJT12 5 TON SINGLE STAGE W/GAS HEAT OR APPROVED EQUAL

CU-1-SHALL BE MOUNTED ON A 4" CONCRETE PAD RHEEM - MOD#RGECR060AJT12 5 TON SINGLE STAGE W/GAS HEAT OR APPROVED EQUAL

CU-1-SHALL BE MOUNTED ON A 4" CONCRETE PAD RHEEM - MOD#RGECR060AJT12 5 TON SINGLE STAGE W/GAS HEAT OR APPROVED EQUAL



PROVIDE SUPPORT FROM ABOVE AS REQUIRED. DUCT SHALL BE SUPPRTED EVERY 10' (MAX.)

2'x2' REGISTER (TYP. 16 EA.) MOUNT 8'-0" AFF

NOTES:

1. REFRIGERANT LINE SIZES AS RECOMMENDED BY MANUFACTURER. MANUFACTURER TO PROVIDE SST BALANCE POINT FOR SYSTEM CAPACITY PERFORMANCE.
 2. PROVIDE PROGRAMMABLE, OVERRIDEABLE THERMOSTAT WITH SUBBASE AND LOCKING COVER. (HONEYWELL T7300 OR EQUAL)
 3. PROVIDE CRANK CASE HEATER, SIGHT GLASS, SOLENOIDS, LIMIT SWITCHES, TIME GUARD RELAY, LIQUID LINE FILTER DRYER.
 4. THIS DRAWING IS FOR REFERENCE ONLY. CONTRACTOR SHALL SUBMIT A MECHANICAL PLAN (HVAC SYSTEM) DESIGNED BY A PROFESSIONAL HVAC COMPANY FOR ENGINEERS APPROVAL.
 5. COORDINATE LOCATIONS OF ALL AIR DEVICES WITH LIGHT FIXTURES AND REFLECTED CEILING FANS. MOUNT ALL EVOCES LEVEL AND TIGHT TO WALL OR CEILING.
- * PROVIDE TRANSITIONS/ADAPTORS AS REQUIRED FOR BRANCH CONNECTION TO RETURN AIR DUCT.

C:\Users\mudford\A.L. Franks\Engineering\Company Files - Files\A.L. Franks\Engineering\louisville\COVID Center\Design_02.dwg

Date	Revision	By
5-23-22	1-HVAC UNIT AND DUCT SYSTEM REVISED	CJM

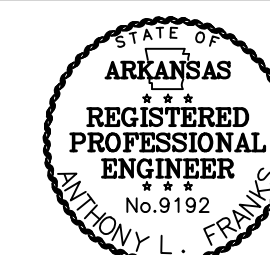
Designed	CJM
Checked	JCH
Drawn	CJM
Approved	JCH



118 East Broad Street
 Texarkana, Arkansas 71854
 Phone (870) 216-1906
 Fax (870) 216-1907

LEWISVILLE COVID CENTER
 LAFAYETTE COUNTY, ARKANSAS

MECHANICAL PLAN



Job No.: LC-01-21
 Scale: N/A
 Date: 05/2022
 Sheet 8