

ADDENDUM NO. 1

TO: ALL PLAN HOLDERS

RE: PRESCOTT, ARKANSAS
EAST ELM AND WEBB STREET SEWER REPLACEMENT
PROJECT NO.: PR-03-22

DATE: December 8, 2022


The Plans, Specifications and Contract Documents for the above referenced project are hereby modified as follows:

PLAN SHEETS

1. REPLACE: Replace existing plan sheets 1-5 with attached plan sheets 1-5.

ADDENDUM NO. 1 ISSUED BY:

A.L. FRANKS ENGINEERING


Kiron S. Browning, P.E.



PRESCOTT, ARKANSAS SEWER SYSTEM IMPROVEMENTS

INDEX TO SHEETS

DESCRIPTION	SHEET NO.
COVER	1
CONSTRUCTION NOTES	2
SEWER MAIN PLAN & PROFILE - E. ELM STREET	3
SEWER MAIN PLAN & PROFILE - WEBB STREET	4
CONSTRUCTION DETAILS	5



CLIENT
TERRY OLIVER, MAYOR

CITY OF PRESCOTT, ARKANSAS
241 E MAIN ST. 71857
PH: 870-887-2210

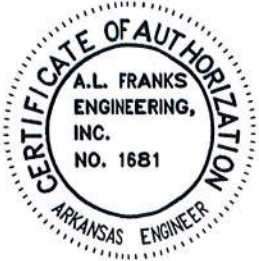


BEFORE CONSTRUCTION BEGINS
GIVE 48 HOURS NOTICE
FOR UNDERGROUND UTILITY LOCATIONS
CALL: THE ARKANSAS ONE-CALL SYSTEM 1-800-482-8998


SUBMITTED BY:



118 E. Broad Street
Texarkana, Arkansas 71854
Phone (870) 216-1906
Fax (870) 216-1907




KIRON S. BROWNING, P.E. PROJECT ENGINEER 11/28/22 DATE


CODY J. STRINGER, E.I. PROJECT MANAGER 11/28/2022 DATE

FINAL FOR CONSTRUCTION

GRAVITY SEWER CONSTRUCTION NOTES

- 1) SEWER MAINS SHALL BE CONSTRUCTED UTILIZING A LAZER WITH GRADE ESTABLISHED THROUGH SEWER PIPE.
- 2) CONTRACTOR SHALL BE RESPONSIBLE FOR DAMAGE TO EXISTING STRUCTURES, PIPING, CONDUIT ETC.. RESULTING FROM CONSTRUCTION WHETHER SHOWN ON THESE DRAWINGS OR NOT.
- 3) CONTRACTOR SHALL PERFORM FINISH GRADING, AND TOP SOILING AND ESTABLISH GRASS IN ALL DISTURBED AREAS PER PLANS AND SPECIFICATIONS
- 4) ALL PROPOSED SEWER MAIN LINES AND MANHOLES TO BE TESTED PER SPECIFICATIONS.
- 5) SEWER MAIN LINES SHALL MAINTAIN A 10’ SEPARATION WHEN PARALLELING A WATER LINE. WHEN CROSSING A WATER LINE THE SEWER MAIN SHALL BE 18” BELOW THE WATER LINE AND SHALL CROSS SAID WATER LINE WITH A FULL JOINT OF PIPE CENTERED UNDER THE WATER LINE. IF 18” SEPERATION IS IMPOSSIBLE THE SEWER MAIN SHALL BE ENCASED IN WATER TIGHT STEEL ENCASEMENT.
- 6) CONTRACTOR SHALL HAVE UTILITIES LOCATED AND SHALL BE RESPONSIBLE FOR DAMAGE TO ALL UTILITIES ARISING FROM CONTRACTOR’S WORK, REGARDLESS OF BEING SHOWN OR OMITTED FROM THESE DRAWINGS. SHOWN UTILITIES ARE INDICATED IN APPROX. LOCATIONS ONLY.
- 7) ALL DEBRIS SHALL BE DISPOSED OF AT THE CONTRACTOR’S EXPENSE. BURNING OR BURYING DEBRIS ON SITE IS PROHIBITED UNLESS APPROVED BY THE ENGINEER.
- 8) ACCESS TO PRIVATE EASEMENTS SHALL BE THE CONTRACTOR’S RESPONSIBILITY. PROPERTY OWNERS SHALL BE NOTIFIED 24-HOURS PRIOR TO ENTRY. ANY DAMAGE TO PRIVATE PROPERTY SHALL BE REPLACED TO THE PROPERTY OWNER’S APPROVAL AT THE CONTRACTOR’S EXPENSE.
- 9) CONTRACTOR SHALL EXPOSE EXISTING UTILITIES IN ADVANCE OF CONSTRUCTION. GRADE ADJUSTMENTS SHALL BE MADE BY THE ENGINEER. COSTS ASSOCIATED w/ NOT EXPOSING EXISTING UTILITIES TO ALLOW GRADE ADJUSTMENT SHALL BE BORNE BY CONTRACTOR.
- 10) SEWER MAIN SHALL BE SDR-26 HEAVYWALL PVC PIPE UNLESS OTHERWISE NOTED ON THE PLANS.
- 11) WHEN TIE-INS TO EXISTING MANHOLES ARE TO BE MADE, CONTRACTOR SHALL VERIFY MANHOLE FLOW LINE AT AN INTERVAL PRIOR TO MANHOLE TO ENSURE ADEQUATE DEPTH OF NEW SEWER MAIN.
- 12) CONTRACTOR SHALL CONCRETE ENCASE ANY SEWER MAIN LINES LESS THAN 24” BELOW EXISTING GROUND.

ARKANSAS HEALTH DEPARTMENT NOTES

- 1. THIS PROJECT SHALL CONFORM TO THE FOLLOWING:
 - A) "RECOMMENDED STANDARDS FOR WATER AND WASTEWATER FACILITIES" (TEN STATES STANDARDS).
 - B) ARKANSAS STATE LICENSING LAW FOR COMMERCIAL CONTRACTORS ACT 150 OF 1965 AND ACT 162 OF 1987 (AS AMENDED) REQUIRES THE INSTALLATION CONTRACTOR TO HAVE A CONTRACTORS LICENSES CLASSIFICATION OF MUNICIPAL AND UTILITY CONSTRUCTION.
 - C) ARKANSAS BOARD OF HEALTH "RULES AND REGULATIONS PERTAINING TO PUBLIC WATER SYSTEMS"
 - D) ALL APPLICABLE AWWA (AMERICAN WATER WORKS ASSOCIATION) SPECIFICATIONS INCLUDING:
 - a) AWWA C600-10 STANDARDS FOR INSTALLATION OF DUCTILE WATER MAIN AND THEIR APPURTENANCES.
 - b) AWWA C605-05 STANDARD FOR UNDERGROUND INSTALLATION OF POLYVINYL CHLORIDE (PVC) PRESSURE PIPE AND FITTINGS FOR WATER.
 - c) AWWA C651-05 STANDARDS FOR DISINFECTING WATER MAINS.
 - d) AWWA C900 & C905 STANDARD FOR PVC PRESSURE PIPE FOR WATER DISTRIBUTION.
 - e) AWWA C651-05 STANDARDS FOR DISINFECTING WATER MAINS REQUIRE BACTI SAMPLING ON DISTRIBUTION SYSTEM EVERY 1200 FEET. HOWEVER, THE ARKANSAS DEPT. OF HEALTH, DIVISION OF ENGINEERING WILL ALLOW BACTI SAMPLING EVERY 2600 FEET ON MAINS AND BRANCH LINES AT THE END OF EVERY BRANCH LINE.
 - f) AWWA C605 SECTION 10.3 STANDARDS FOR HYDROSTATIC TESTING.
- 2. AWWA C651-05, APPENDIX C (CHLORINE NEUTRALIZATION) WILL BE COMPLIED WITH. " DRAINAGE OF MAINS AND DISPOSAL OF CHLORINATED WATER SHALL BE IN ACCORDANCE WITH ALL FEDERAL, STATE AND LOCAL LAWS, ORDINANCES AND REGULATIONS. MAINS SHALL BE DRAINED TO SANITARY SEWERS, WHERE AVAILABLE. DRAINAGE DIRECTLY TO SURFACE WATERS (CREEKS, RIVERS, STREAMS, LAKES, PONDS, ECT.) WILL NOT BE ALLOWED. DRAINAGE BRANCHES, BLOW-OFF’S, AIR VENTS AND APPURTENANCES SHALL BE PROVIDED WITH VALVES AND SHALL BE LOCATED AND INSTALLED AS SHOWN ON THE PLANS AND STANDARD DETAILS. DRAINAGE OF MAINS WILL BE ACCOMPLISHED IN SUCH A MANNER AS TO MINIMIZE EROSION AND SILTATION TO ADJOINING PROPERTIES. WATER VELOCITY FROM DRAINAGE AND OR BLOW-OFF WILL BE DISSIPATED AS NECESSARY TO PREVENT EROSION. DRAINAGE BRANCHES OR BLOW-OFFS SHALL BE NOT BE CONNECTED TO ANY SEWER, SUBMERGED IN ANY STREAMS, OR INSTALLED IN ANY OTHER MANNER THAT WILL PERMIT BACK SIPHONAGE INTO THE DISTRIBUTION SYSTEM.

Date	Revision	By

Designed _____

Checked _____

Drawn _____

Approved _____



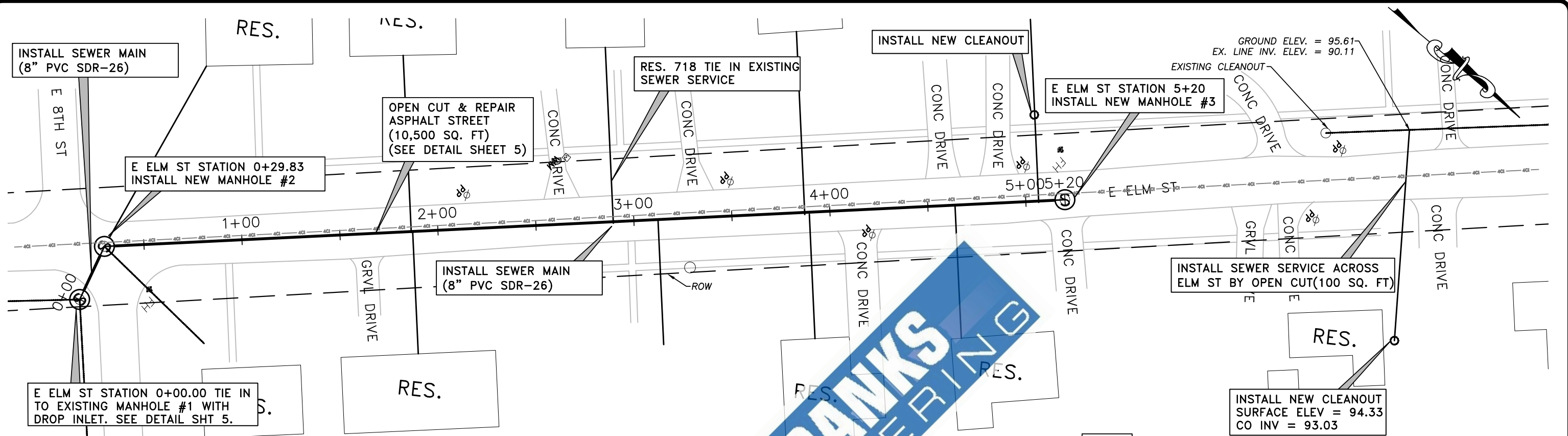
118 East Broad Street
Texarkana, Arkansas 71854
Phone (870) 216-1906
Fax (870) 216-1907

CITY OF PRESCOTT, AR
SEWER SYSTEM
IMPROVEMENTS

GENERAL NOTES



Job No.: PR-03-22
Scale: AS SHOWN
Date: NOVEMBER 2022
Sheet 2

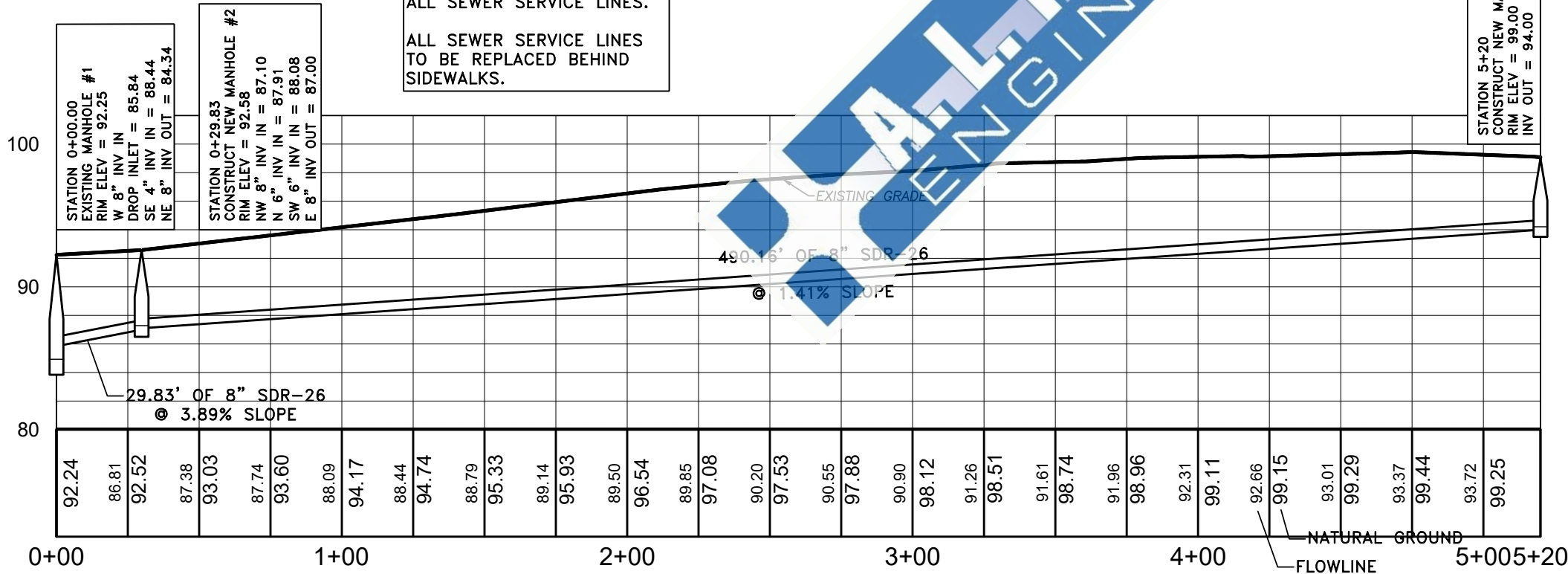


SEWER MAIN E ELM ST - PLAN & PROFILE

HOR SCALE: 1"=50'-0"
VERT SCALE: 1"=10'

NOTES:

FIELD VERIFY LOCATIONS OF ALL SEWER SERVICE LINES.
ALL SEWER SERVICE LINES TO BE REPLACED BEHIND SIDEWALKS.



GENERAL NOTES:

CONTRACTOR SHALL VERIFY GRADES PRIOR TO INSTALLATION. IF ANY CONFLICTS ARE OBSERVED CONTACT THE ENGINEER.

CONTRACTOR SHALL PERFORM UTILITY LOCATES PRIOR TO EXCAVATION.

CLEARING SHALL BE INCLUDED AS NEEDED AND ALL DEBRIS SHALL BE REMOVED FROM THE SITE AND DISPOSED OF BY THE CONTRACTOR. (NO DIRECT PAY)

CONTRACTOR TO VERIFY AND RECONNECT ALL EXISTING SEWER SERVICES TO NEW LINE W/ 4" SCH 40 PVC.

CONTRACTOR TO KILL OUT EXISTING SEWER MAINS BY PUMPING PIPE FULL OF FLOWABLE FILL AND FILL MANHOLES PER DETAILS SHEET 5.

GENERAL NOTES:

SEWER MAINS SHALL HAVE A MINIMUM 10-FT HORIZONTAL SEPARATION FROM WATER MAINS WHEN INSTALLED PARALLEL TO WATER MAINS.

SEWER MAINS SHALL HAVE A MINIMUM 18-INCH VERTICAL SEPARATION FROM WATER MAINS AT CROSSINGS.

WHEN SEPARATION CANNOT BE ACHIEVED CONTACT ENGINEER. SEWER SHALL BE INSTALLED IN AN APPROVED PRESSURE RATED CARRIER PIPE WITH JOINTS 10-FT FROM THE WATER MAIN. CONTRACTOR SHALL FURNISH ALL NECESSARY FITTINGS OR TRANSITIONS WITH PIPE INSTALLATION.

Date	Revision	By

Designed _____
Checked _____
Drawn _____
Approved _____



118 East Broad Street
Texarkana, Arkansas 71854
Phone (870) 216-1906
Fax (870) 216-1907

CITY OF PRESCOTT, AR
SEWER SYSTEM
IMPROVEMENTS

SEWER MAIN PLAN & PROFILE
EAST ELM STREET
0+00.00 - 5+20.00



Job No.: PR-03-22
Scale: 1"=50'
Date: NOVEMBER 2022
Sheet 3

GENERAL NOTES:

CONTRACTOR SHALL VERIFY GRADES PRIOR TO INSTALLATION. IF ANY CONFLICTS ARE OBSERVED CONTACT THE ENGINEER.

CONTRACTOR SHALL PERFORM UTILITY LOCATES PRIOR TO EXCAVATION.

CLEARING SHALL BE INCLUDED AS NEEDED AND ALL DEBRIS SHALL BE REMOVED FROM THE SITE AND DISPOSED OF BY THE CONTRACTOR. (NO DIRECT PAY)

CONTRACTOR TO VERIFY AND RECONNECT ALL EXISTING SEWER SERVICES TO NEW LINE W/ 4" SCH 40 PVC.

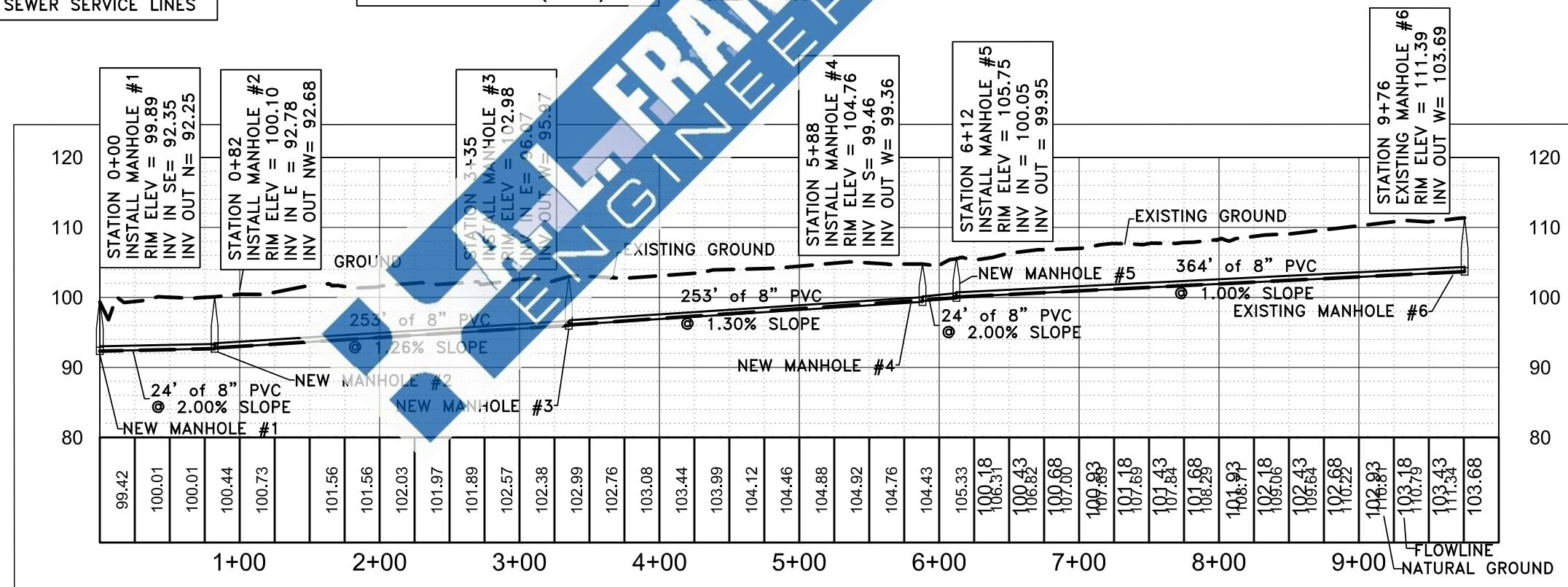
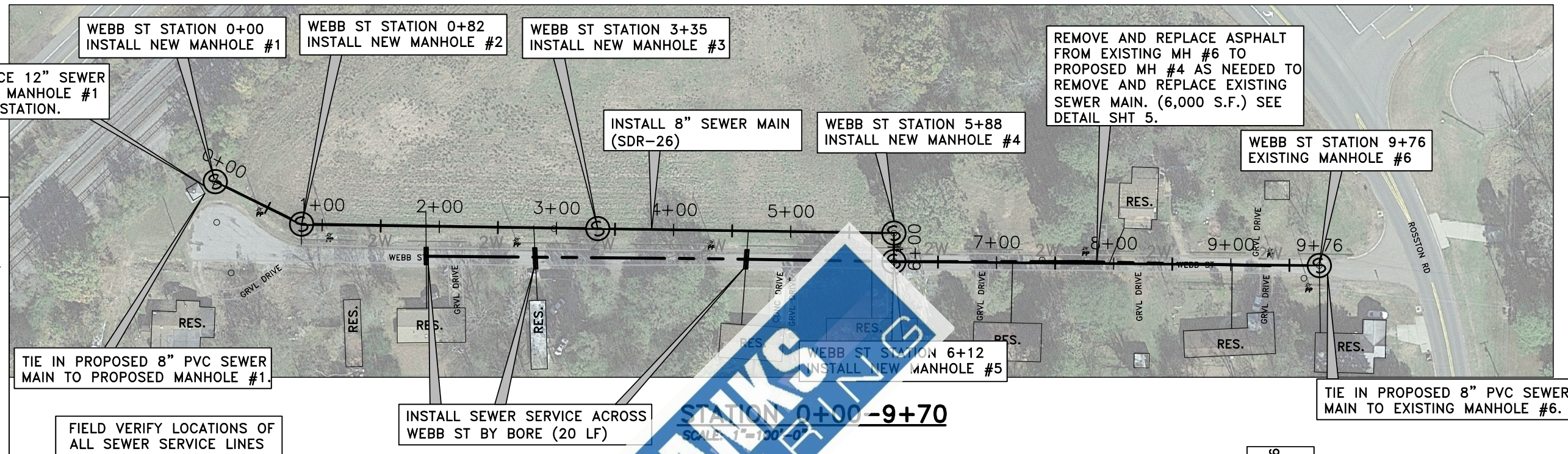
CONTRACTOR TO KILL OUT EXISTING SEWER MAINS BY PUMPING PIPE FULL OF FLOWABLE FILL AND FILL MANHOLES PER DETAILS SHEET 5.

GENERAL NOTES:

SEWER MAINS SHALL HAVE A MINIMUM 10-FT HORIZONTAL SEPARATION FROM WATER MAINS WHEN INSTALLED PARALLEL TO WATER MAINS.

SEWER MAINS SHALL HAVE A MINIMUM 18-INCH VERTICAL SEPARATION FROM WATER MAINS AT CROSSINGS.

WHEN SEPARATION CANNOT BE ACHIEVED CONTACT ENGINEER. SEWER SHALL BE INSTALLED IN AN APPROVED PRESSURE RATED CARRIER PIPE WITH JOINTS 10-FT FROM THE WATER MAIN. CONTRACTOR SHALL FURNISH ALL NECESSARY FITTINGS OR TRANSITIONS WITH PIPE INSTALLATION.



STATION 0+00-9+70

HOR. SCALE: 1"=100'-0"
VER. SCALE: 1"=4'-0"



118 East Broad Street
Texarkana, Arkansas 71854
Phone (870) 216-1906
Fax (870) 216-1907

101 West Main, Ste. 413
El Dorado, Arkansas 71730
Phone (870) 444-5160
Fax (870) 444-5161

CITY OF PRESCOTT, ARKANSAS
SEWER MAIN PLAN AND PROFILE

WEBB ST. SEWER

STA: 0+00-9+70



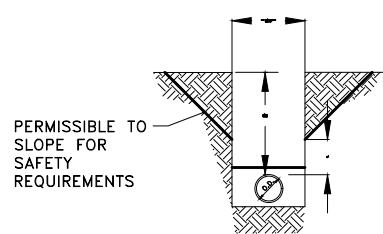
Job No.: PR-04-22

Scale: 1"=100'

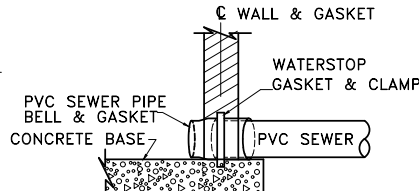
Date: NOVEMBER 2022

Sheet 4

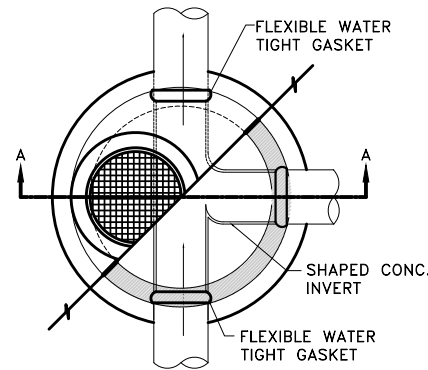
No.	Date	Revision	By



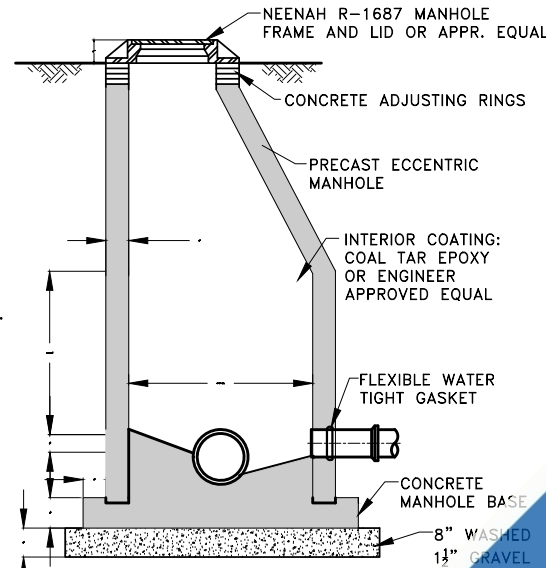
TYPICAL TRENCH SECTION
N.T.S.



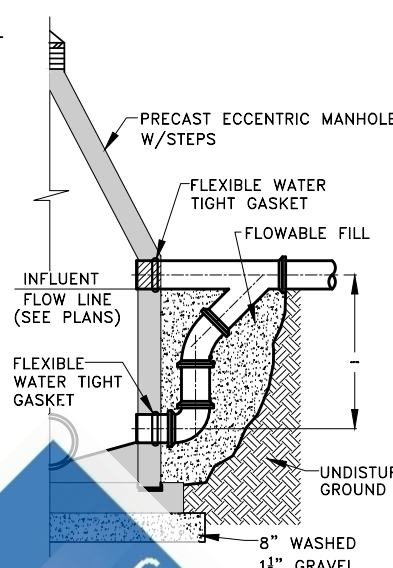
PVC SEWER PIPE MANHOLE CONNECTION DETAIL
N.T.S.



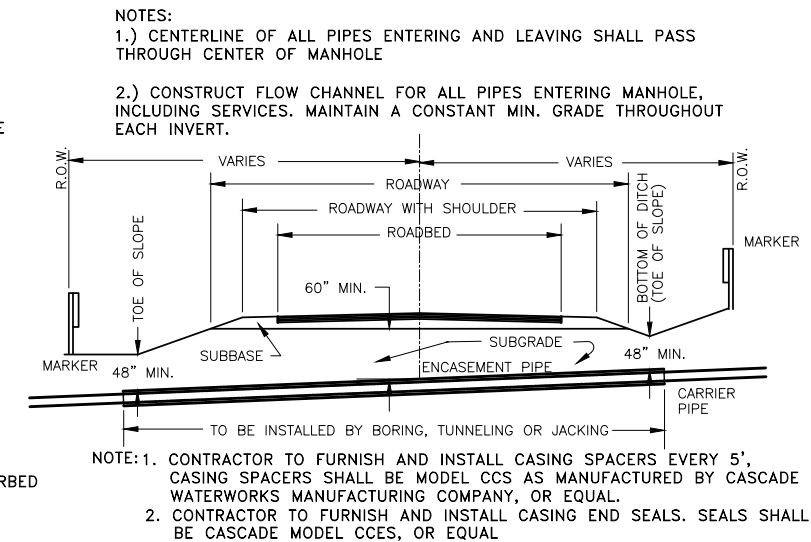
STANDARD MANHOLE PLAN
N.T.S.



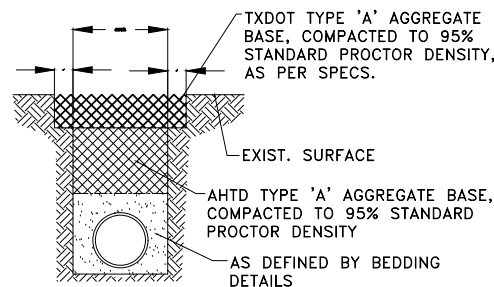
STANDARD MANHOLE SECTION A-A
N.T.S.



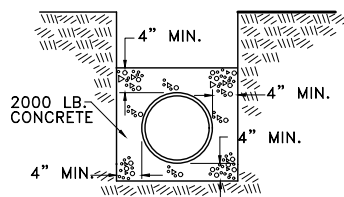
DROP MANHOLE SECTION
N.T.S.



- NOTES:
- 1.) CENTERLINE OF ALL PIPES ENTERING AND LEAVING SHALL PASS THROUGH CENTER OF MANHOLE
 - 2.) CONSTRUCT FLOW CHANNEL FOR ALL PIPES ENTERING MANHOLE, INCLUDING SERVICES. MAINTAIN A CONSTANT MIN. GRADE THROUGHOUT EACH INVERT.

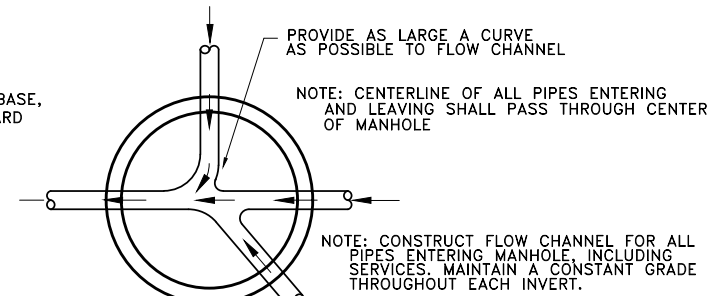


GRAVEL SURFACE REPAIR DETAIL
N.T.S. (NOT A PAY ITEM)

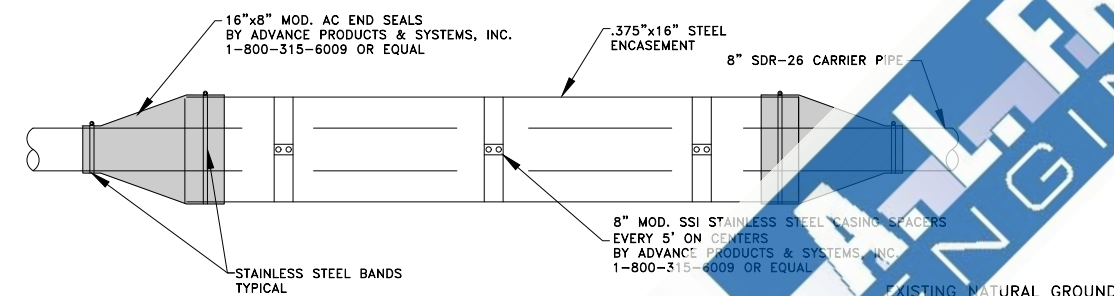


NOTE:
4" MIN. SHOWN SHALL APPLY TO THICKNESS AROUND PIPE AND BELLS.

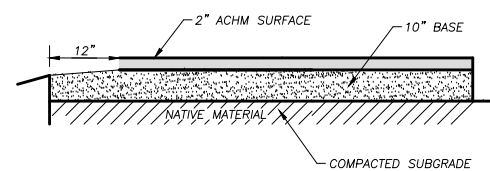
CONCRETE ENCASEMENT
N.T.S.



MANHOLE BOTTOM DETAIL
N.T.S.

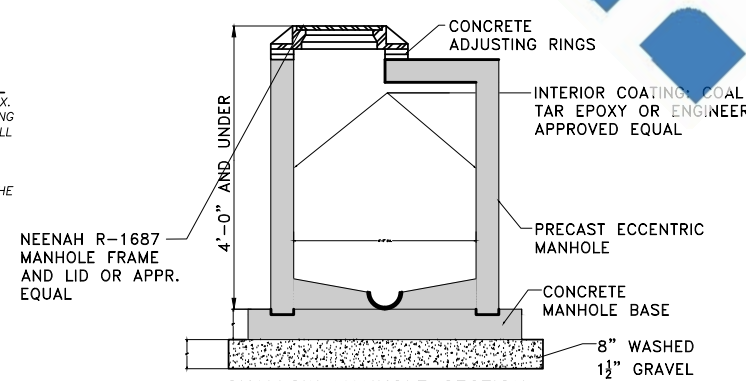


STEEL ENCASEMENT DETAIL
N.T.S.

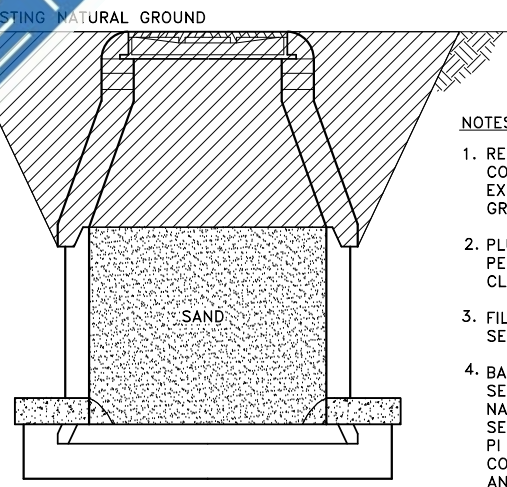


- NOTES:
1. PAVEMENT SHALL BE 2" THICK ACHM SURFACE PG 64-22, 12.5 MM MIX. PRIME COAT IS SUBSIDIARY. REFER TO AHTD SPECIFICATION 407. EXISTING STREET SECTION SHALL BE MILLED A DEPTH OF 2-INCHES. EDGES SHALL BE SAWCUT. MILLINGS SHALL BE PROVIDED TO THE CITY.
 2. BASE MATERIAL SHALL BE 10" THICK CLASS 7 CRUSHED STONE.
 3. SUBGRADE SHALL BE SHAPED AND COMPACTED PRIOR TO BASE INSTALLATION. IF SUBGRADE PROBLEMS ARE ENCOUNTERED CONTRACT THE ENGINEER TO EVALUATE CORRECTIVE ACTIONS. EXISTING MATERIAL REMOVED FOR WIDENING SHALL BE DISPOSED OFF-SITE BY THE CONTRACTOR.

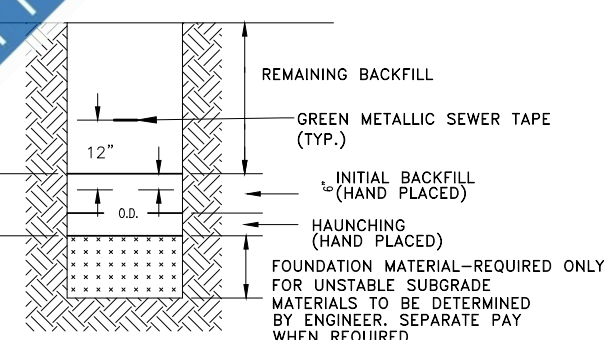
TYPICAL ASPHALT SECTION
N.T.S.



SHALLOW MANHOLE SECTION
N.T.S.

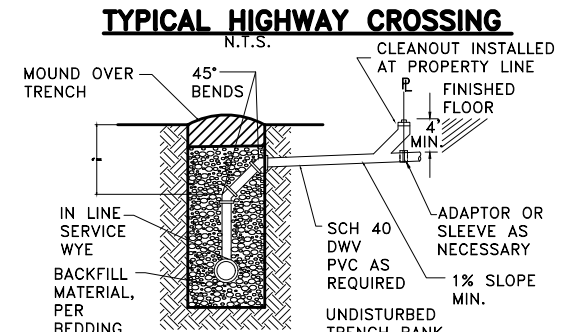


ABANDON EXISTING MANHOLE DETAIL
N.T.S.

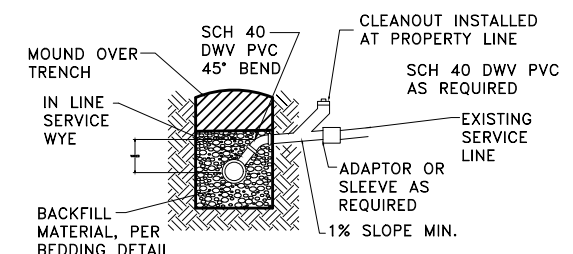


RIGID PIPE-CLASS-II-EMBEDMENT DETAIL
(TO BE USED FOR RIGID PIPE EXCEPT AS NOTED ON PLANS)
N.T.S.

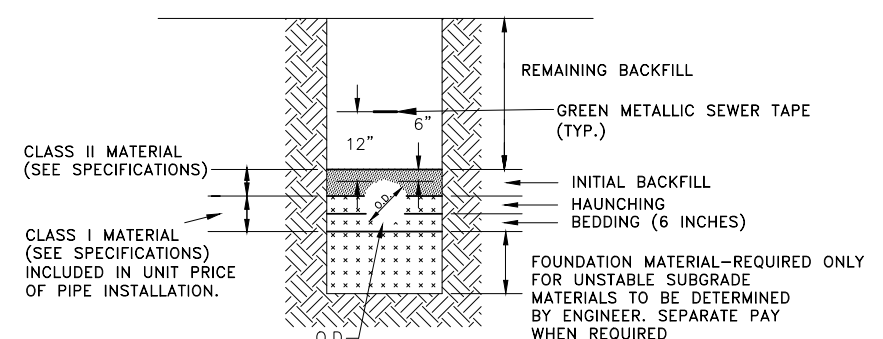
- NOTES:
1. REMOVE EXISTING CONICAL SECTION BELOW EXISTING NATURAL GROUND.
 2. PLUG EXISTING PIPE PENETRATIONS WITH CLASS B CONCRETE.
 3. FILL REMAINING BARREL SECTION WITH SAND.
 4. BACK FILL ABOVE BARREL SECTION TO EXISTING NATURAL GROUND WITH SELECT FILL WITH A PI < 15 AND LL < 30. COMPACT SELECT FILL AND SAND TO 95% STANDARD PROCTOR DENSITY.



RISER FROM DEEP SEWER LINE
N.T.S.



TYPICAL SERVICE OUTLET
N.T.S.



GRAVITY SEWER PVC PIPE EMBEDMENT DETAIL
N.T.S.

Date	Revision	By

Designed	
Checked	
Drawn	MKR
Approved	



118 East Broad Street
Texarkana, Arkansas 71854
Phone (870) 216-1906
Fax (870) 216-1907

**CITY OF PRESCOTT, AR
SEWER SYSTEM
IMPROVEMENTS**

CONSTRUCTION DETAILS



Job No.: PR-03-22
Scale: AS SHOWN
Date: NOVEMBER 2022
Sheet 5